

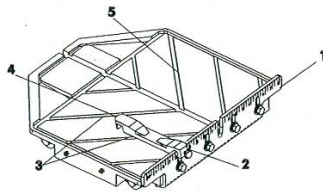
18" Tile Saw

WARNING! Only use the 10" blade for this saw. Setting smaller size of diamond blade may grab the material being cut, causing damage and possibly injury.

WARNING! Always wear safety goggles, dust mask, and ear protection while operating the saw.

WARNING! Keep hands, feet, hair, and clothing away from all rotating parts.

THE CUTTING TABLE



Features:

- The Adjustable ruler guide (1) enable easy oversize cutting, it is also equipped with inches and centimeters marks (2) for precision cuts.
- Simply line up the material being cut with the appropriate pre-marked lines (3) on the cutting table.
- The 14" cutting table provides more support during larger cutting jobs than the standard 11" cutting tables.

Steps to Use the 45° / 90° Rip Guide

1. Set the rip guide (4) by positioning it on the desired dimension and tighten the threaded knob. Make sure that the rip guide is firmly tightened to avoid slippage. The rip guide can be used for 90° rip cuts and 45° angle cuts from both the left and right side. (Note the straight and 45° angled slits on the bottom of the rip guide.)
2. After the rip guide is positioned for the desired cut, place material flat against the rip guide and the measurement rail.

- For 45° rip cuts, place the corner of material in the open slot of the measurement rail.
3. Simply line up the material being cut with the appropriate pre-marked lines on the cutting table.
 4. Now you are ready to make your cut.

Steps To make miter cuts:

1. For miter cuts, place the lip of the miter block on the measurement rail, with the threaded knobs facing you.
2. Tighten the threaded knobs to secure the miter block in place.(5).
3. Place material onto miter block and you are ready to cut.

CUTTING DEPTH

The recommended cutting depth is 1/4" below the cutting table surface. To adjust the cutting depth, loosen the mounting plate adjustment knob so that the blade is 1/4" below the top of the cutting table's surface.

WARNING! Setting the blade too low may damage the cutting table and if set too high may grab the material being cut causing damage and possible injury.

10" Blade Diameter cutting depth 3-3/4"

Wet Cut Blades

DO'S

- Inspect blades daily for cracks or uneven wear.
- Always use appropriate blade for material being cut.
- Inspect arbor shaft for uneven wear before mounting blade.
- Always use blades with the correct arbor shaft size.
- Ensure that blade is mounted in the correct direction.
- Secure the blade to the arbor with a wrench.
- Use proper safety equipment when operating the saw.
- Periodically check the blade for cracks or bond fatigue.
- Always have a continuous flow of water on both sides of blade.

DON'TS

- Do not operate the saw without safety guards in position.
- Do not operate the saw with blades larger than 10".
- Do not cut dry with blades marked "Use Wet".
- Do not exceed manufacturer's recommended maximum RPM.
- Do not force blade into material let blade cut at its own speed.